

Red Laser Modules

Collimated Diode Lasers
 Easy use & maintenance free
 Longlife operation
 High efficiency
 High reliability



ii

Specifications

Model No.	LSR635-U-
Wavelength (nm)	635
Wavelength tolerance(nm)	±0.5
Output power (mW)	100, 150, 200, 300
Spatial mode	TE
Operating mode	CW or Modulation upto 30kHz
Power stability (rms, over 4 hours)	<2%
Temperature Stabilizing	TEC
Warm-up time (minutes)	<5
M ² factor	<20
Beam divergence, full angle (mrad)	<2
Beam diameter at the aperture (mm)	3.0~5.0
Spectral linewidth (nm)	<1.0
Polarization ratio	100:1
Point stability after warm-up (mrad)	<0.05
Operating temperature (oC)	10-35
Expected lifetime (hours)	5000
Dimensions of Laser head (mm)	133(L) ;68 _± (W) ;47 _± (H)

1/2

Learn more on IL Photonics at
www.il-photonics.com

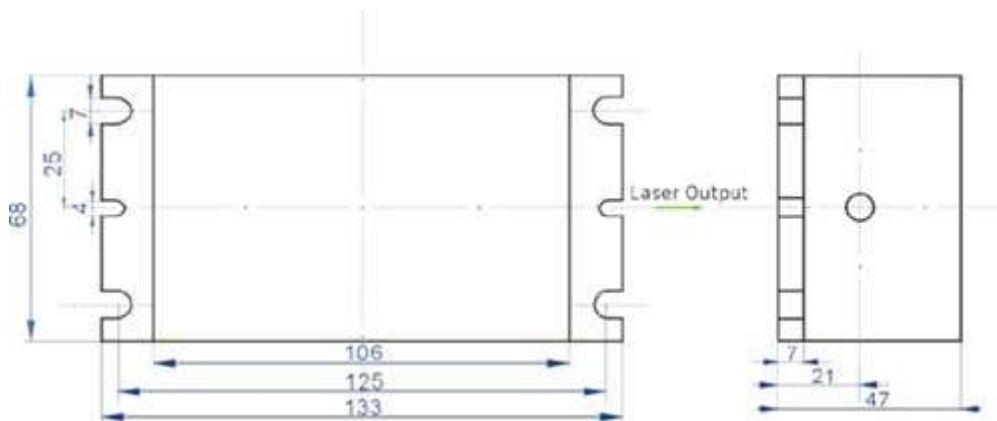
Phone:(+972) 2-9923532; Fax: (+972) 2-9921480;
 E-mail: moshe@il-photonics.com; 511 Hashita, Beit Shemesh 99552, Israel;

LSR 635nm Series



ii

Shell drawing



©Copyright Lasever Inc. All Rights Reserved

2/2

Learn more on IL Photonics at
www.il-photonics.com

Phone: (+972) 2-9923532; Fax: (+972) 2-9921480;
E-mail: moshe@il-photonics.com; 511 Hashita, Beit Shemesh 99552, Israel;